

NILMA PRIMARY SCHOOL

Newsletter #1
2nd February 2023

REAL News

We are a Respectful Relationships School

76 Bloomfield Road, Nilma 3821 (03) 56232963 or 0423562379 nilma.ps@education.vic.gov.au www.nilmaps.vic.edu.au ABN 93 378 606 495

Celebrating REAL Learners @ Nilma!



WELCOME BACK!

We are looking forward to an exciting year this year. It was lovely to hear all the holiday stories today and

know that families had a wonderful break. Students settled into their homegroups well. It always amazes me on how much students grow over the holiday period!

During the next couple of weeks, we will focus on our school vision and values to build the new homegroup student relationships and expectations. Welcome to our new Foundation students and families for 2023 and to the new students and their families joining us in other year levels too!

FOUNDATION STUDENTS

Welcome to all our Foundation students! They have had a busy start to school. Foundation students will not be required to attend school on Wednesdays for the first 4 weeks of term 1. The first full week for

Foundation students commences on Monday 27th February. All Foundation students will come home with a satchel/diary. The school diaries and satchels are to be brought back to school each day as they are an important part of daily school communication.

'GET TO KNOW YOU' PARENT-TEACHER DISCUSSIONS

'Get to Know You' discussions are an opportunity for parents and teachers to meet and 'get to know' each other, in an informal setting, establishing connections between families and the school.

Discussions will be held on Thursday 16th February from 12.30pm – 5.30pm. Bookings can be made via Sentral. Log-ons were emailed to families last week. If you require your log on details again, please contact the Office.



WHOLE SCHOOL FAMILY GATHERING & Year 6 Leadership Badge Presentation

We would like to invite all families to a school gathering on Thursday 23rd February 2023 from 5.00pm to 6.30pm.

This evening will bring our school community together for a pizza, chat and to celebrate the Year 6 leaders with the badge presentations. Mark the date in your diary and more detailed information will come next week.

Nilma Primary School acknowledges the traditional custodians of the lands on which we work and learn, the Gunai Kurnai Nation. We pay our respects to their Elders past, present and emerging.



★ Respect, Responsibility & Resilience ★ Environment ★ Achievement ★ Learning



NILMA PRIMARY SCHOOL

We are a Respectful Relationships School

School Council News



SCHOOL COUNCIL—Decision Making at NPS

The culture of Nilma Primary School is to work in partnership with parents for the benefit of all students and families. We have been very fortunate to have such a positive and engaged parent body for Council. We thank all 2022 School Councilors for their commitment to the school. I would like to thank parents, Sophie Gray, Jess Tatchell and Melissa Bradshaw for their contributions to council in 2022.

There will be many opportunities for parents to have some input into decision making for the future of the students at NPS. One avenue of input is involvement at a School Council level.

The final 2022 School Council meeting will be held on Tuesday 14th February 2023 at 7.00pm ONLINE.

School Council for 2023 has three parent positions and two DET representative positions for nomination.

Any parents wishing to apply for a position please complete the appropriate form. Self-Nomination Forms are available from the Office. Please contact the Office if you require a nomination form to be emailed.

Nominations close on Thursday 16th February 2023.

LATE NOMINATIONS CANNOT BE ACCEPTED.

Once all nominations are received the final processes, if required, will be advertised in the newsletter. The list of candidates and nominations will be posted and a ballot may be necessary.

Nilma Primary School's Annual General Meeting (AGM) will be held on Tuesday 14th March 2023., welcoming in the new School Council representatives.

If you are interested in becoming involved in school council, please contact the Office for further information.

I am also available to chat with, please leave a message at the Office and I will return your call if I am unavailable.

Please do not hesitate to contact any of our current school council members, including our President, Shannon Gibbons.

Regards

Annette Sutherland

Welcome back to another school year. I hope that you all had a restful and joyful holiday period. A particularly big welcome to our new staff members and new families – it's great to have you as part of the Nilma Primary School community. We're looking forward to another excellent year for school council, and that will start with electing at least 2 new school council members. Being on school council is a really great way to get involved in your children's education. There are numerous roles of the school council, but one key function is to establish the broad direction and vision of the school within the school's community. Parent members on school council bring their experience as parents at the school and the views of the wider school community to school council meetings. Since COVID, our meetings have become online. We will continue with this, but there are also in person touch points throughout the year with the working groups/committees that are formed from council. We aim to keep meetings to no more than an hour and a half, often less. We would really like to see more parents join the school council to continue to contribute to and build our school community.



If you have any questions about the roles and what's involved, please don't hesitate to contact myself or Annette, or any of the other active school council members (as listed below). Nominations can be made by filling out the form below and emailing or sending into the school.

Current Parent Members are: Shannon Gibbons, Sam Cross, Laura Gorenko and Angela Tumino

All the best to all students, staff and families on the year ahead.

Best,

Shannon Gibbons

School Council President

CAMP DATES: 3/4 Forest Edge Camp -2nd-3rd November 5/6 Urban Camp- 13th-15th September

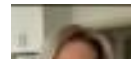
★ Respect, Responsibility & Resilience ★ Environment ★ Achievement ★ Learning



NILMA PRIMARY SCHOOL

We are a Respectful Relationships School

Meet the teTeam..



Annette Sutherland
Principal



Jane O'Brien
Business Manager

Nilma Primary School 2023 Staff Team



Amanda Buckler
Literacy Leader / Tutor



Kat Swift
School Chaplain



Helen Brown
Red Homegroup



Megan De Jong
Green Homegroup



Georgia Gardiner
Blue Homegroup



Kirsti Farr
Yellow HG / Numeracy Leader



Emily Matarczyk
PASE



Nicholas Sparkes
Performing Arts



Kristy Uren
Sustainability/Environment



Kim James
MARC/Literacy



Sharon Faulds
Education Support



Barb Vagg
Education Support



Vicki Commaeur
Education Support



Leanne Hodge
Education Support



Jess Tatchell
Education Support



Saige Birrell
OSHC Supervisor



Jason Hurst
ICT Technician



David Ridsdale
Maintenance

CHAPLAIN'S CHAT

Happy New Year to all.

I had a great holiday and hope you did too.

I want to remind families that we have free **Breakfast Club** on Wednesday and Friday mornings in the STEAM room. If you are finding mornings a bit hectic the Breakfast Club can be great support.

Its not fancy but it is a good start to the day with cereal and toast on offer or if you prefer, we also have fruit-cups. We have gluten free milk option and if there are other concerns, please give me a heads up and I'll see what I can do.

Breakfast Club starts at 8.40 and we close the door for new customers at 8.50 so please be in time as getting to class is our priority.

CAMP DATES: 3/4 Forest Edge Camp -2nd-3rd November 5/6 Urban Camp- 13th-15th September

★ Respect, Responsibility & Resilience ★ Environment ★ Achievement ★ Learning



NILMA PRIMARY SCHOOL

We are a Respectful Relationships School

CURRICULUM CORNER

Home Group Learning - Term 1

Welcome to 2023!

We would like to welcome our students back to school and hope you have all had a re-energising break. A special welcome is extended to our new Foundation students and families who are new to Nilma.

English

At Nilma we continue to implement a Phonological Awareness and Synthetic Phonics Program across the school involving explicit teaching and learning practices. Reading and Viewing remain a focus, with comprehension skills; thinking within, about and beyond the text, modelled and practised by students. Reading is thinking - making connections, predictions and monitoring what is read. Students build comprehension strategies and respond to texts by contributing to discussions, listening to others and recording their thinking with pictures and words - 'making tracks' of their thinking.

Rich literary discussions are planned for and implemented to support and extend students' comprehension of texts experienced. Students' Speaking and Listening skills are improved through rich discussions and the implementation of common protocols that are inclusive and provide students with 'think time'.

Developing writers at Nilma, students are encouraged to experience a variety of mentor texts, looking at text structures and the use of language and literary devices. Through planning, conferencing and regular opportunities to write, students receive feedback on their writing, developing and refining their style. This term students are focusing on writing recounts and narratives.

Mathematics

Our whole school focus for Mathematics this term will primarily be Place Value and Measurement. Students will complete a pre-assessment to identify student knowledge and determine their next stage of learning, identifying and developing their own learning goals. Students will work on differentiated tasks to develop the skills to attain their Mathematics learning goals with explicit teaching. In order to motivate and engage our students a range of opportunities will be presented for students to apply their skills through rich learning tasks. Students will participate in discussions to clarify understandings and share their learning. They will continue to utilise the computer program *Essential Assessment* to assess their individual learning needs and access differentiated tasks to consolidate their understanding.

History

Students in Foundation will investigate the concept of a family. They will learn to identify different members of a family and how they are connected. They will identify the people in their immediate family and investigate the country of origin of their family. Students will develop understandings of how stories of the past can be communicated through oral histories, photographs, books and digital media.

Students in Year 1/2/3 will be investigating the past, present and future and looking at the sequencing of time. They will also be looking at different historical places and considering why they are important. Students will look at Aboriginal and Torres Strait Islander peoples' history and stories and consider why these are important and should be preserved.

Students in Year 4/3 will investigate their local community, how it has changed over the years and who contributed to its development over time. Students undertake the historical inquiry process to investigate the developments, events and people that have shaped their community. They will draw on local history records, photographs and landmarks to identify what has changed in their community over the years, what has stayed the same, and who has contributed to these changes.

Students in Year 6/5 will examine colonial Australia in the 1800s, including the expansion of the British colonies and why they developed. They will use a range of resources to develop a historical narrative which includes an understanding of chronological sequencing of events, analysing sources, use of historical terms and recognising cause and effect. Inspired by the theme of 'choice and challenge', the students will be encouraged to identify questions, form an historical inquiry and share their research tasks to invoke critical thinking skills such as questioning, application and analysing.



NILMA PRIMARY SCHOOL

We are a Respectful Relationships School

CURRICULUM CORNER

Home Group Learning Term 1 continued

Health and Physical Education

Successful with Sporting Schools funding this term we are able to offer both Orienteering and Athletics for all students. Students will develop their athletic skills in the lead up to the **West Gippsland Rural Small Schools Athletics Day** to be held on **Friday, 31st March** at the Geoff Watt Track, Burke Street Warragul. (Back up day Wednesday 5th April.) Further information and permission forms will be sent out to families later in the term.

A clinic has been organised for Hockey through a visiting Program run by **Hockey Victoria, 'Hook into Hockey'**. This incursion set for Friday the 10th of February will provide an opportunity for students to acquire new skills and practice skills such as correct grip, passing, receiving and moving with the ball (dribbling).

Following on from last year and the positive response from students we have also organised a **Soccer clinic** run by Football Victoria coaches, for Friday the 17th of February.

Brain Food

Students are given the opportunity to have a brain break/fruit break at 10:00am and 1:45pm. Students are encouraged to bring along fruit which is easy to eat. For example cut apple, grapes, strawberries or mini cucumbers. Please avoid sticky and large items that take too long to consume as this is only a short 5 minute break. It is helpful when students bring their fruit to school in small containers that are easily accessible.

Student Wellbeing

The Respectful Relationships program covers eight topics; Emotional Literacy, Personal Strengths, Positive Coping, Problem Solving, Stress Management, Help Seeking, Gender Identity and Positive Gender relations. Each homegroup works through activities related to their levels. The beginning of a year is a time to celebrate individuals, personal strengths and develop emotional literacy; recognising and expressing emotions. Nilma fosters respectful relationships and supports students with developing positive coping strategies.

Home Learning

Students are to record their nightly reading and bring their student diary in daily to be checked off. Recording students' nightly reading in the Student Diary enables tracking and for Reading Night certificates to be awarded. During the term students have weekly opportunities to borrow through MARC Van Library, with continued access to school books. Parents are asked to support their child/ren with reminders, regularly checking and signing the diary.

It is important that you support your child with the Learning Activities Under the Guidance of Home (LAUGH) tasks, negotiating a work space and time to attempt set tasks and practise skills.

Student Diary

Our personalised Nilma Primary School Diary is a fabulous resource and reference point for parents and students. In the front of the diary are pages specifically created for Nilma Primary School students and parents. School organisational and procedural information is included. Word lists, teaching and learning approaches and mathematical strategies are part of the resources available to support learning between school and home.

It remains essential that students bring their diary with them to school each and every day. Student diaries will be safe keeping their logins and passwords for various online learning platforms. The diary is also an organisational and communication tool between home and school. In the case of a lost or damaged diary, replacement diaries are available for purchase through the school office.

Regards,

Amanda Buckler, Kirsti Farr, Georgia Gardiner, Meg De Jong & Helen Brown



NILMA PRIMARY SCHOOL

We are a Respectful Relationships School

FIRST DAY OF SCHOOL

Red Homegroup

NIGHTLY READING

Students will be bringing home books for nightly reading as part of their LAUGH (Learning Activities Under the Guidance of Home) program. Please support your child with their reading by sharing these books at home.

Your child has already been introduced to the texts being sent home and are encouraged to discuss the pictures and think about what is happening in the book. Praise your child's attempts at reading the words and sharing their thinking. Sounding out the words and looking at the pictures for support, are both good strategies for effective readers.

Once read, the title of the book needs to be recorded in the student diary provided and signed (on the day read). Books are to be returned to school the following day in the school satchel.



Green HG





NILMA PRIMARY SCHOOL

We are a Respectful Relationships School

FIRST DAY OF SCHOOL

Blue Homegroup



Happy Birthday

Jase Blair

Crystal

Hudson

Ada

Amelia P

Seb

Makkie

Maddie M

Landon

Yellow HG



★ Respect, Responsibility & Resilience ★ Environment ★ Achievement ★ Learning



NILMA PRIMARY SCHOOL

We are a Respectful Relationships School

SCHOOL PHOTOS

School Photographs for 2023 -

Nilma Primary School

Annual school photos will be taken on **Thursday, 23 February 2023.**

Students are to be in full school uniform.

PRE-ORDER ONLINE (orders close at 5:00 pm on the day prior)

See the packages available and place your pre-order online.

To place your order **Go to our website** or scan the QR code;

www.spargophoto.com.au

Select> **School Photo Pack Orders**

Enter your **School Access Key: BD7B69JY**

Select the pack you want and complete the form.

Sibling photos are available for families with multiple children attending the school.

Sibling photos must be ordered online before 5pm the day prior.

**** A complimentary family/sibling photograph is available for families who order an individual pack for 3 or more children at the same school.**



To be eligible, you must order all the individual packs first and then add the family photograph to the same shopping cart. The discount will be automatically applied.

Place your order online before 5pm the day prior, you do not need to return

any paperwork.

If you have any inquiries, please contact us on (03) 5942 5234

SCHOOL SPONSORS 2023

Nilma Primary School would like to thank our 2023 diary sponsors...





NILMA PRIMARY SCHOOL

We are a Respectful Relationships School



Nilma Primary School – CURRICULUM TIMETABLE 2023 – TERM 1



DAY	Home Group	9.00 – 11.00		11.30 – 1.00	LUNCH		1.45 – 3.15
MONDAY	HG Red	Literacy	Recess	Numeracy	Lunch	READING	History
	HG Green						History
	HG Blue						Digital Technology
	HG Yellow						Visual Art
	Literacy Specialist	In class		PLC Planning			Tutor Group A Tutor Group B Tutor Group C
TUESDAY	HG Red	Literacy	Recess	Numeracy	Lunch	READING	PMP
	HG Green						PMP
	HG Blue						Visual Art
	HG Yellow						Digital Technology
	Literacy Specialist	In class		Program Planning/ Mentor			Tutor Group A Tutor Group B Tutor Group C
WEDNESDAY	HG Red	Literacy	Recess	Numeracy	Lunch	READING	Developmental Play
	HG Green						Visual Art / Music
	HG Blue						History
	HG Yellow						History
	Literacy Specialist	In class		Program Planning/ Mentor			Tutor Group A Tutor Group B Tutor Group C
THURSDAY	HG Red	SUSTAINABILITY & ENVIRONMENT	Recess	Literature/MARC	Lunch		PASE
	HG Green	Performing ARTS		PASE			Literature/MARC
	HG Blue	Literature/MARC		SUSTAINABILITY & ENVIRONMENT			Performing ARTS
	HG Yellow	PASE		Performing ARTS			SUSTAINABILITY & ENVIRONMENT
							LAUGH SESSION
FRIDAY	HG Red	Literacy	Recess	Numeracy	Lunch	AUSLAN	ODD WEEK: RESPECTFUL RELATIONSHIPS
	HG Green						Whole School Assembly
	HG Blue						BUDDIES PROGRAM
	HG Yellow						EVEN WEEK: SMILING MINDS
	Numeracy Specialist	Program Planning		In Class			PLC Planning Tutor Group A Tutor Group B

MARC (MV) – Mrs James Performing Arts – Mr Sparkes Sustainability and Environment – Mrs Uren & Mrs Hodge PASE – Ms Matarczyk/ Ms Sutherland

SPECIALIST DAY - Room Allocations

Room Allocations	9-10	10-11	11.30-1.00pm	1.45pm-2.45pm
MARC VAN	YELLOW	YELLOW	RED	GREEN
Performing Arts	STEAM ROOM	STEAM ROOM	STEAM ROOM	STEAM ROOM
AUSLAN	GREEN	GREEN	GREEN	RED
SUSTAINABILITY	BLUE	BLUE	BLUE	BLUE

★ Respect, Responsibility & Resilience ★ Environment ★ Achievement ★ Learning



NILMA PRIMARY SCHOOL

We are a Respectful Relationships School

From The Office



COMMUNICATION WITH FAMILIES

In 2023 we will be moving to incorporate more sustainable practices in all aspects at Nilma. We will be utilising forms of electron-

ic communication more and staff will be proactive in using digital platforms for planning, collaboration and training. Sustainable practices we will be using include;

Electronic Newsletters – we will be emailing the newsletter to all families and will continue to upload a copy on SENTRAL and on the school website. If you do require a hard copy please contact the Office.

School Website – The website will provide the school community with access to school policies, forms, DET links and other information.

SENTRAL – all families have access to our reporting and attendance software package SENTRAL. On this platform families can access newsletters, enter student attendance information, update contact details and view student reports. New families will receive an access key and information to register and log on today via email. If you have forgotten your log-on details for SENTRAL, please contact the Office.

NPS Community Chat (Official) Facebook Group – if you haven't already requested to join please find the group on Facebook! On this platform we share news, updates and reminders.

Please contact the Office if your email address has changed!

ICY POLES AVAILABLE AT LUNCHTIMES

50c each.

Children can bring money along and put into icy pole money box. School Leaders sell the icy poles at Lunchtimes. Money raised is used by Junior School council to purchase items.

MORNING ROUTINES – BEFORE SCHOOL DUTY

Students that arrive prior to 8.40am must remain in the under-cover area until a staff member is on duty. Students that arrive earlier than 8.40am are encouraged to utilise OSHC for Before School Care, for enquiries and bookings please contact the Office. For the starting week of school, staff will be present in the mornings in the car park area to meet with students as they are dropped off. Parents can meet with staff at this time also and we encourage parents to contact the Office to leave a message for staff members if you are unable to speak with them before school.

Classrooms will be made available for students to access at 8.55am, then students can prepare their belongings and materials, becoming REAL Learners @ Nilma!

Foundation students will transition into the classroom from 8.45am, Mrs Brown will be waiting in the room to meet with students! Parents are encouraged to walk students to the door of the Red Homegroup to meet with Mrs Brown as we settle into the year.

CAR PARK SAFETY

While we settle back into routine, please be very aware of the congestion in the car park for about 5 - 10 minutes after school. When parking around the outer side of the carpark – please encourage children to move around the outer sides (pathways) around the carpark area.

If you have parked in the middle bays, parents please note we only cross across the crossing area. There should not be any need for parents or students to be walking diagonally across the car park or across traffic. The teachers will be discussing the car park safety with students and identifying appropriate behaviours and school expectations.

We also request that parents not to park in the staff carpark area, as the car park becomes congested at pick up times it can become difficult navigating the entry back into the car park area with children and adults walking on the pathways.

Yellow squares indicate staff carparking and we encourage parents to avoid these parks at both drop off and pick up times.

There is a teacher on duty at the crossing area after school each day. We encourage all students to walk and wait at the under-cover area until parents arrive for pick up after school. Pick up can be between 3.15 and 3.30pm to relieve congestion. Please do not park out the front of the school, this is not a parking zone, it is not safe and you will get booked!

We also encourage families to utilise the pathway to the school from the Nilma township, car parking is available in the bus stop area.



NILMA PRIMARY SCHOOL

We are a Respectful Relationships School

A Few Reminders From The Office



ANNUAL PERMISSION BOOKLETS

Annual Permission Booklets will be sent home with families today. Some foundation parents received last year. These booklets can be filled out and returned by Friday 10th February 2023.

STUDENT MEDICAL MANAGEMENT PLANS

Medical management plans are required for any student/s that are recorded as having a medical condition that requires management whilst at school. These plans need to be updated annually by your GP or specialist. Plans that are completed can be returned by Friday 10th February.

Please contact the Office if you have any questions or queries regarding student medical management plans.

SCHOOL HATS

As part of our SunSmart policy, all students are required to wear hats whilst outside during the SunSmart period. If students do not have hats at school they will be asked to stay in the undercover area for their recess periods. Hats can be purchased from Hip Pocket Workwear in Warragul.

SUNSCREEN

We encourage students to apply sunscreen at home before coming to school each morning. Students may like to bring their own sunscreen from home to reapply at lunchtime. Please ensure sunscreen bottles are clearly labelled and can be handed in to the Office. Please note that no aerosol-based sunscreen is to be brought to school. If you have any questions or concerns, please contact the Office.



ABSENCES AND ATTENDANCE

DET requirements for reporting and recording attendance data requests that all absences are explained on the day that they occur or prior. Parents are encouraged to explain student absences by text, phone call, note, email or verbally to staff. Absences can also be recorded by parents through SENTRAL. Automatic text messages are sent to parents each morning at 10.30am if students are marked absent without an explanation.

SCHOOL UNIFORM

Just a reminder that all students are expected to be in full school uniform each day. Uniform items can be purchased from Hip Pocket Workwear Warragul. There is also a range of items available at the Uniform Swap Shop. If you require an item from the Swap Shop, please contact the Office.

If families have any items of uniform that they no longer require, we always welcome donated items for our uniform swap shop - uniform items can be 'swapped' or purchased for a small donation

PRIVACY POLICY

Our school collects, uses, discloses and stores student and parent personal information for standard school functions or where permitted by law, as stated in the Schools' Privacy Policy. Please take time to remind yourself of our school's collection notice, found on our website <http://www.nilmaps.vic.edu.au/>. For more information about privacy, refer to: Schools' Privacy Policy — During the next couple of weeks, we will focus on our school vision and values to build the new homegroup student relationships and expectations.

Welcome to our new Foundation students and families for 2022 and to the new students and their families joining us in other year levels too!

PARENT PAYMENTS FOR 2023 CHANGES STUDENTS RESOURCE PACKS

Within our school in the past, the support of voluntary contributions has allowed us to provide an enriched learning and teaching program for every student that is highly valued by our school community. The commitment from parents to contribute benefits students and results in improved achievement outcomes, wellbeing and engagement in learning. The ongoing support of our families ensures that our school can offer the best possible education and support for our students. We want to thank you for all your support, whether that's through fundraising or volunteering your time. This has made a huge difference to our school and the programs we can offer.

Thank you to all parents who have followed up with the pack purchases at the Office. Please don't hesitate to discuss payment plans with Business Manager, Jane O'Brien.

Payments can be directly made to the school bank account.

Nilma Primary School

BSB : 063532

Account Number: 10081033



NILMA PRIMARY SCHOOL

We are a Respectful Relationships School



Physical Education -Sporting Schools

As a part of Sporting Schools, our focus will be on Athletics as well as Orienteering during our PASE sessions this term. Students will have the opportunity to develop their running, jumping and throwing skills in preparation for the Small Schools Athletics Day on Friday 31st March.

Orienteering is part treasure hunt, part amazing race. Students will be guaranteed a whole lot of fun when we begin this later in the term.



SUSTAINABILITY

Today we took time to clean up our beautiful grounds and chicken coop as well as learn more about Composting!



★ Respect, Responsibility & Resilience ★ Environment ★ Achievement ★ Learning



MARC LIBRARY NEWS

The MARC Library van visits Nilma Primary School on Thursdays. During library sessions students celebrate books and reading. During Term 1 all students will celebrate Library Lovers' Week, sharing with their class what they love about books and reading and encouraging peers to read books.

Red Homegroup will read a variety of books to introduce them to the library system and being responsible library users. Green Homegroup will complete an author study on Bob Graham, comparing the characters and settings in his collection of Australian literature.

Blue and Yellow Homegroup will revise all types of books in the MARC collection and participate in activities to promote reading of new and unfamiliar books. Book tastings will be offered each week to encourage wider reading habits.

Nilma families do a super job of supporting the MARC Library, I encourage you to remind students to return books weekly and to take good care of them, a library bag is a great way of caring and storing books.

Looking forward to sharing amazing books throughout 2023,

Kim James



Performing Arts





NILMA PRIMARY SCHOOL

We are a Respectful Relationships School

Nilma Notes!

SCHOOL LUNCH ORDER NEWS – TUESDAY LUNCH ORDER DAY



Hello Families & Staff,

Welcome to a new school year and we look forward to supplying your school lunch orders.

Please see below a few important updates regarding school lunches:

- *Your school's class names have been created on Flexischools. You will need to ensure you have created an account and registered your child's new class before ordering in 2023;*
- Please remember the **cut-off time for ordering lunches is**

10.00pm the night before lunch order day;

- *There have been some new items added to the menu – a Sandwich Bento Box and a Sweet Chilli Chicken Tender can be an option for your sandwich/wrap/roll;*
- We will also be utilising a new communication tool available on Flexischools throughout the year, so please ensure you have 'notifications' turned on for your Flexischools account to be sure that you don't miss any important messages/updates;

- Please note our new contact number for any lunch order enquiries:

Michelle 0409 437 341;

- For any new school families, please remember to create a Flexischools account and register your child. Please visit: www.flexischools.com.au or download the Flexischools app.

Thanks,
Alimentos Lunch Orders





NILMA PRIMARY SCHOOL

We are a Respectful Relationships School



OSHC News

Welcome back NPS OSHC students! I hope you had an awesome summer break and enjoyed lots of sunshine and sleep ins! I am so excited to see everyone and have lots in store for Term 1.

As Meg has moved onto to a classroom teaching position, it is just me (Saige) for the time being!

New OSHC enrolments:

The NPS OSHC program runs before school care (7am-8:45am) and after school care (3:15pm-6pm). If you are interested in enrolling your child into the OSHC program please collect an enrolment form from Jane at the office. If you have any questions please don't hesitate to get in touch!

Once your child is enrolled, you will be asked to download the [mobile app MyXplor](#). This software will enable parents to access the OSHC service from a free app, being able to add, amend and change bookings, sign students in and out digitally, and view their statements.

This term will see:

- the daily timetable catering to all students interests with equal time dedicated to both indoor and outdoor activities
- opportunities for students to have their voice heard and provide feedback during 'Kids Catch Up' meetings (held every few weeks during afternoon tea)
- The weekly timetable integrating a mix of outdoor team games and gratitude/wellbeing activities to help equip the students with both the opportunity to strengthen friendships and practice mindfulness, kindness and self-regulation
- The use of the OSHC Google Classroom to receive regular updates of the students including group activities and their individual performance

WEEK 1				
Mon 30th Jan	Tues 31st Jan	Wed 1st Feb	Thurs 2nd Feb	Fri 3rd Feb
	Welcome back! Afternoon tea, catch up & group games	Outdoor team games, arts, crafts & construction	Sports, outdoors & playground play, board games & puzzles	The gratitude game , outdoor picnic & free play, mindfulness activities
WEEK 2				
Mon 6th Feb	Tues 7th Feb	Wed 8th Feb	Thurs 9th Feb	Fri 10th Feb
KIDS CATCH UP (10mins) , outdoor team games, arts, crafts & construction	Sports, outdoors & playground play, board games & puzzles	Outdoor team games, arts, crafts & construction	Outdoor play, the gratitude game , indoor brain break games	Outdoor picnic & free play, board games & quiz night
WEEK 3				
Mon 13th Feb	Tues 14th Feb	Wed 15th Feb	Thurs 16th Feb	Fri 17th Feb
Outdoor team games, arts, crafts & construction	Sports, outdoors & playground play, science experiments!	Outdoor play, the gratitude game , indoor brain break games	Outdoor team games, arts, crafts & construction	Outdoor picnic & free play, mindfulness activities
WEEK 4				
Mon 20th Feb	Tues 21st Feb	Wed 22nd Feb	Thurs 23rd Feb	Fri 24th Feb
Outdoor team games, arts, crafts & mindfulness activities	Outdoor play, the gratitude game , indoor brain break games	Outdoor team games, arts, crafts & construction	Sports, outdoors & playground play, board games & puzzles	Outdoor picnic & free play, board games & puzzles



Mid Gippsland Junior Badminton
Association Presents

Shuttle Fun



Making birdies fly!

Labertouche Badminton Hall
6th & 13th February
Drouin Badminton Courts
20th & 27th February
Ellinbank Badminton Hall
6th & 13th March
Warragul Badminton Hall
20th & 27th March
All sessions 4.30pm - 5.30pm

*New players that attend 4 sessions or more will
receive a free racquet!*

Gold Coin Donation per week

Contact Sandra for more information
0438 582 921



What's On @ Nilma!

FEBRUARY 2023

Monday	Tuesday	Wednesday	Thursday	Friday
		<i>Foundation Rest Day</i> 1 Breakfast Club	2 <i>Newsletter</i>	3 Breakfast Club
6	7 School Lunch Orders	<i>Foundation Rest Day</i> 8 Breakfast Club	9 MARC	10 Breakfast Club Hockey Clinic
13	14 School Lunch Orders <i>School Council Meeting</i>	<i>Foundation Rest Day</i> 15 Breakfast Club	16 MARC <i>Parent Teacher Discussions/SSGs</i> <i>Nominations for School council close</i>	17 Breakfast Club Soccer Clinic
20	21 School Lunch Orders	<i>Foundation Rest Day</i> 22 Breakfast Club	SCHOOL PHOTOS 23 MARC <i>Newsletter</i> <i>Family Pizza Night—</i> <i>Year 6 Leaders Badge Ceremony 5.-6.30pm</i>	24 Breakfast Club
27	CENSUS DAY 28 School Lunch Orders	MARCH 2023		

Monday	Tuesday	Wednesday	Thursday	Friday
		1 Breakfast Club	2	3 Breakfast Club
6	7 School Lunch Orders	8 Breakfast Club	9 MARC	10 Breakfast Club
13 LABOR DAY PUBLIC HOLIDAY	14 <i>School Council Meeting / AGM</i> School Lunch Orders	15 Breakfast Club	16 MARC <i>Newsletter</i>	17 Breakfast Club
20	21 School Lunch Orders	22 Breakfast Club	23 MARC	24 Breakfast Club
27	28 School Lunch Orders	29	30 MARC	31 WGRSSA SPORTS DAY

APRIL 2023

Monday	Tuesday	Wednesday	Thursday	Friday
3	4 School Lunch Orders	5 Breakfast Club WGRSSA Sport Back up	6 <i>Newsletter</i> <i>Term 1—End 1.15pm</i>	Good Friday
School Holidays 10	School Holidays 11	School Holidays 12	School Holidays 13	School Holidays 14
School Holidays 17	School Holidays 18	School Holidays 19	School Holidays 20	School Holidays 21
Curriculum Day 24 No School	ANZAC Day 25 Public holiday	Term 2 26 Students Return to school	27	28